



2023

Annual Report

Peach Tree Health is committed to providing personalized, affordable, high-quality health services. Peach Tree Health is your center for healing, opportunity and hope. We are here to keep our neighbors healthy and our community growing.



Peach Tree Health performed exceptionally well in 2023, thanks to the hard work of more than 200 deeply committed staff and providers. This was a year of growth in all of Peach Tree's services and in every community we serve. We welcomed a record number of new patients into our care in 2023 and increased access to medical, behavioral health, vision, dental, and many specialty services offered in our health centers.

Our strategic plan to further integrate our services into medically disadvantaged areas of our communities helped bring much-needed care to thousands of patients we might not have seen. Investment into our population health care model resulted in better clinical outcomes, more preventative care, and improved outreach and management to our most medically vulnerable patients. Peach Tree Health continues to innovate and advocate to ensure healthcare access for everyone.

- Greg Stone, CEO

Financials

Total Revenue
\$37,815,475

Year-end Cash
\$7,974,456

Net Income \$4,308,785

Patients Served

Insurance

Medicaid Patients: 26,105
Medicare Patients: 4,902
Private Insurance: 4,561
Uninsured: 2,680

Special Populations

Migratory: 290
Seasonal: 444
Agricultural Workers: 734
Homeless Shelter: 734
Transitional: 48
Doubling Up: 121
Street: 55
Unknown: 434
Total Homeless: 732
Veterans: 162
School Based Service Site: 633

Income Levels: Percentage of Federal Poverty Levels

100% and Below: 56%
101-150%: 8%
151-200%: 4%
Over 200%: 4%
Unknown: 28%

Ages

0-5: 2,933
6-10: 3,757
11-18: 5,860
19-29: 4,819
30-44: 6,627
45-64: 8,578
65+: 3,818

Total Visits

Clinic Visits: 105,773
Virtual Visits: 13,014
Patients: 52,408

Services Offered

Medical

- Acupuncture
- Chiropractic Services
- Mobile Medical Outreach
- Diabetes
- Family Medicine
- Hepatitis C Treatment
- Immediate Care
- Pulmonology
- Pediatrics
- Podiatry
- Sports Physicals
- Women's Health/OB/GYN
- Pediatric Hematology
- Telemedicine
- Medication Assisted Treatment (MAT)

Dental

- The Happy Tooth Mobile Dental Office
- Baby Root Canals
- Cleanings and Fluoride
- Dental Care Education
- Dentures
- Extractions
- Fillings
- Screenings
- Sealants
- Silver Diamine Fluoride
- X-rays

Integrated Behavioral Health

- Planning Education
- Case Management
- Dialectical Behavioral Therapy Group
- Family Therapy
- Individual Therapy (Adult & Children)
- Narcan Distribution
- Group Therapy
- Psychiatric Medication Support
- Navigation
- Substance Use Medication Services
- Budgeting/Assistance

Vision

- Routine check ups
- Corrective lenses/contacts
- Diabetic Retinopathy
- Cataracts
- Glaucoma
- Macular Degeneration
- Dry Eyes

Pharmacy

- New Prescriptions
- Prescription Refills
- Prescription Home Delivery
- USPS Mail Delivery

HIV & PrEP Services

- Confidential STI & STD Testing
- Free Rapid HIV Testing
- HIV Prevention Medications



Dental Services

Peach Tree Health is committed to providing personalized, affordable, high-quality dental services and continues to grow to serve our communities. We provide dental services for the entire family: adults & children.

Services Offered

- Baby Root Canals
- Cleanings and Fluoride
- Dental Care Education
- Dentures
- Extractions
- Fillings
- Screenings
- Sealants
- Silver Diamine Fluoride
- X-rays

The Happy ToothMobile

The Happy ToothMobile Dental Office provides services to schools throughout Yuba County. School-site services reduce the amount of time children miss school and eliminate the transportation barrier for families.

Total Visits
6,018

Total Patients
2,241

Success Stories

New High School ROP Collaboration

"Throughout Yuba County, Peach has continued to serve elementary school patients very well. Unfortunately, we lose visibility on many students after they go to middle school and especially high school. The Marysville High ROP collaboration serves to reconnect patients to dental care and hopefully cement the importance of lifelong dental care. It's really a win-win situation as the students get access to care while the dental assisting ROP students get real world clinical experience. It takes place in the high school's dental suite."



-Dr. Rupaul Ghuman

"Peach Tree Health understands the challenges a rural county presents for families trying to access health services. By eliminating the transportation barrier over a thousand children each year are receiving preventative and restorative dental treatment thanks to Peach Tree Health's commitment to providing much needed medical services to our community's most vulnerable and underserved families. Peach Tree Health is the epitome of community health at its best. 73% of the families receiving dental care through Peach Tree Health's mobile dental office answer "NO" to the question "Would your child have seen a dentist this year if school site services were not available?"

-Ronda Bowers MJUSD Dental Coordinator



Integrated Behavioral Health

The Integrated Behavioral Health team works with medical providers, addiction specialists, and perinatal providers to give a whole-person care. We provide one-on-one therapy, medication support, substance use treatment, and group therapy. Our team specializes in developing a treatment plan with the patient in session to help accomplish goals. Our providers offer a range of mild to moderate services to all ages. We want our community to feel their best, and part of physical health is focusing on brain health!

Behavioral Health	Substance Abuse
Clinic Visits: 2,947	Clinic Visits: 3,043
Virtual Visits: 5,789	Virtual Visits: 628
Social Workers Clinic Visits: 1,953	Total Patients: 1,335
Virtual Visits: 3,184	Tobacco Screenings & Intervention: 11,270
Total Patients: 974	
Depression Screenings: 8,081	

Patient Story

14-year old patient "Jane" stopped attending school because she was feeling insecure about her image. She thought everyone was judging her about her weight. Through Behavioral therapy, she has started processing these emotions and is gaining an understanding for how her thoughts are created. She has been able to create a new thought process and is beginning to feel comfortable with attending school in person again.

"I have the opportunity to let people see my beauty in many ways."
-Jane



Community Health Services

Coordinated Care and Community Health is a growing program that seeks to meet the complex healthcare needs of our patient population. Case Managers and Community Health Workers are part of an integrated team that assists patients with addressing social health needs such as housing, transportation, food, and access to medical care. The team organizes community outreach events offering informational brochures, guidance on local mental/behavioral health services, suicide prevention, Narcan, PrEP materials, diapers, water, cold weather gear, and other essential donations.

Community Outreach Events: 78

Narcan Kits Distributed: 210

Outreach Packs Distributed: 2,100

People Helped Through Case Management: 165



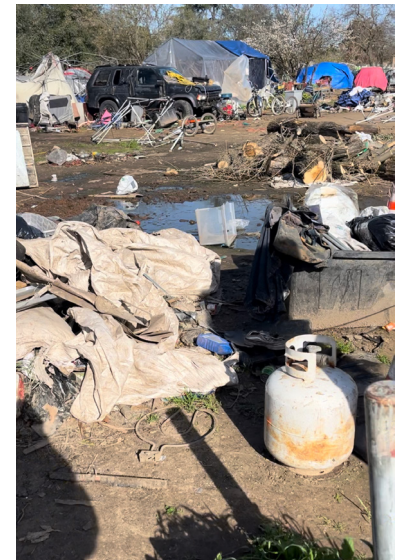
Success Story

Our patient "David" is a 68 year old man who had been facing chronic homelessness for several years before coming to Peach. David was camping at the river bottoms or in the Marysville McDonald's parking lot where he frequently visited the ER for his healthcare needs. Case workers completed an intake for the CalAIM Enhanced Care Management program to assess his needs and help him create goals for his health and daily life.



David did not know a good night's sleep, so after assessing his needs, it was determined that housing was his top priority. Peach collaborated with Habitat for Humanity and he was housed. David was challenged during this transition from homeless to housed; he felt isolated and alone. During this period, David was assisted in his search for a purpose. He was encouraged to speak with his friends daily, and he was connected to additional services.

David's next goal is to work on his vision and dental needs while keeping all appointments. He is in need of cataract surgery and dentures and is expected to have great outcomes. We are happy to have supported our patient to develop goals to help his needs, values and bridge him to services.



Mobile Health Van

Serving Yuba-Sutter & Sacramento Counties

Our mobile health van travels to our low-income communities to bring healthcare straight to the most vulnerable populations. We can meet those who would otherwise not be able to come into a clinic for care.

Services Offered

- Immunizations
- Primary & Preventive Medical Care
- Sports Physicals
- Mental Health
- COVID Testing
- Family Planning

In-kind Donations Distributed/Needed

- Cold Weather Gear
- Hygiene Items
- Snack Packs
- Portable Phone Chargers
- Plastic Document Protectors
- Flashlights
- First Aid Kits
- Feminine Hygiene Products
- Can Openers
- Quarters for Laundry
- Rain Ponchos



Vision Services

A comprehensive eye health examination at Peach Tree Health can detect diseases like Glaucoma and diabetes, that not only affect your eyes, but your overall health. Our innovative technological equipment allows us to detect even the smallest



changes in your vision and eye health. Our state-of-the-art diagnostic equipment helps us ascertain your risk factors for debilitating eye diseases and whole body diseases, which, with early detection in many cases, are manageable.

Our Clinical Eye Exams screen for:

- Diabetic Retinopathy
- Cataracts
- Glaucoma
- Macular Degeneration
- Dry Eyes

Services Offered

- Onsite Optical Department
- Optometry
- Routine Check-ups



Clinic Visits
26,324

Total Patients
17,378

Success Stories

A patient at Peach Tree Vision complained of high eye pressure, a dramatic decrease in vision, and intense pain. After examination by our optometrist, Dr. Montgomery, he diagnosed the condition as neovascular glaucoma. This sight-robbing disease often results from damage from uncontrolled diabetes. The high pressure in his eye had severely damaged the optic nerve, which, if left untreated, could blind him within days. Dr. Montgomery educated his patient on the emergent nature of his condition, began treatment, and referred him to our ophthalmologist partner for surgical care. First, medicine was injected directly into the eye to shrink the inflamed blood vessels responsible for the high pressure. The patient then underwent specialized glaucoma surgery to provide a more permanent treatment. The patient's condition quickly stabilized after surgery, effectively stopping this vision loss.

"Unfortunately, in medically underrepresented communities throughout this state, our patients face many barriers to access to eye care. I am proud to be a part of a long collaboration between Peach Tree Health and Ridge Eye Care to overcome these barriers and save sight. The story of this young man is not unique. I am certain he would have lost his vision had it not been for his access to Peach Tree Vision."

-Anthony J. Rudick, O.D.

What is a Federally Qualified Health Center?



Peach Tree Health became a Federally Qualified Health Center (FQHC) in 2006. FQHCs are an integral component of the state's safety-net provider landscape. Non profit health centers provide care to patients regardless of insurance status or ability to pay. Operating in every region of the state, FQHCs are as diverse as the populations they serve. From small clinics to multisite networks, FQHCs provide a wide and increasing array of services and have grown in scope, capacity, and sophistication in recent years.

FQHC Fast Facts:

- Qualify for funding under Section 330 of the Public Health Service Act
- Qualify for enhanced reimbursement from Medicare and Medicaid
- Serve an underserved area or population
- Provide comprehensive health services
- Have an ongoing quality assurance program
- Have a governing board of directors
- Offer a sliding fee scale

California establishes a single, per-visit payment designed to compensate for all the costs it reasonably incurs serving Medicaid patients. The rate is identical for each billable patient visit, no matter how sick the patient or how intense the required services. This, along with completely uninsured patients, creates a gap in funds.

- **1 out of 12 people in the US rely on FQHCs**
- **169,700 people in Sacramento County live in poverty**
- **256,593 Medicare Beneficiaries in Sacramento County**
- **112,000 uninsured in the Sacramento Valley**
- **73,000 uninsured in the Northern Counties**
- **71,600 people in Yuba-Sutter Counties live in poverty**
- **30,289 Medicare Beneficiaries in Yuba-Sutter Counties**
- **21,300 people in Colusa County live in poverty**
- **3,753 Medicare Beneficiaries in Colusa County**

